
Quality Policy – GDP-Compliance



Service worldwide for
Pharma and medicine products

www.pharmalogisticspartner.com

Tel. +49 (0) 40 752 77-0

sales@pharmalogisticspartner.com

Dratelstraße 18 • D- 21109 Hamburg



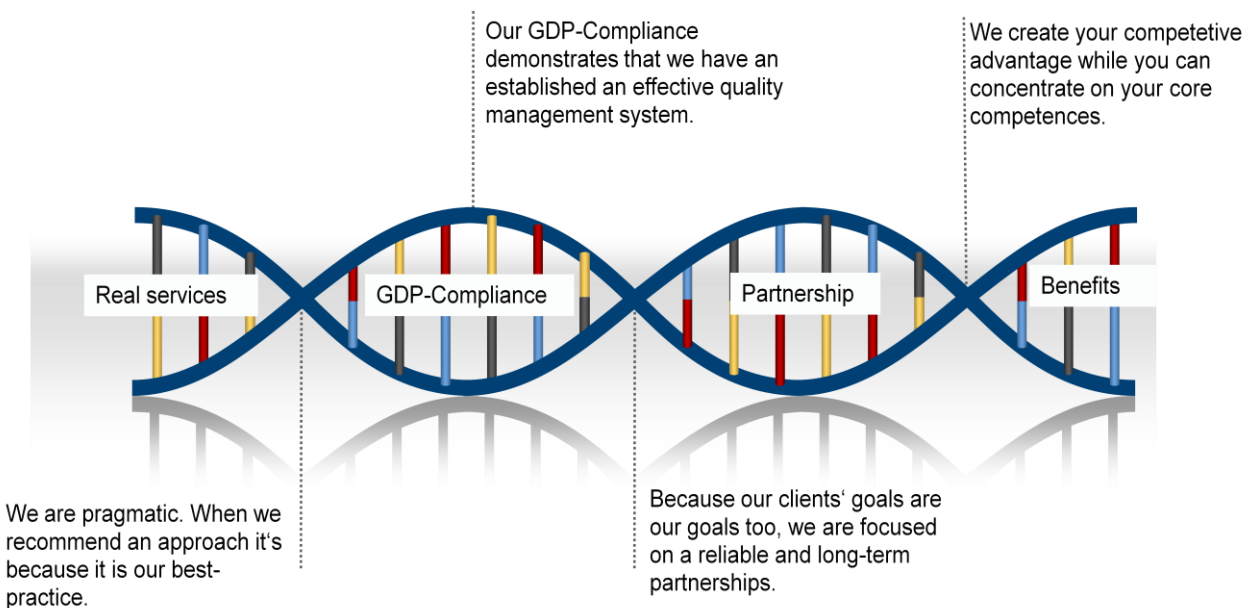
Company Overview

The Hanse Service logistics GmbH is currently operating successfully as a medium enterprise forwarding agency specialized in pharmaceutical products in Germany and the European Union. The combination of interacting with an European network of certificated and for that reason trustworthy transport companies with modern fleets of temperature controlled trucks over Europe and technologies and our core competences in the field of sea freight, air freight, own warehousing 10.000qm , pick pack, and distribution gives us the opportunity to offer a state-of-the-art service in Europe in this segment.

Our Aspiration

- Create strong and reliable partnerships
- Offer state of the art services for the Pharma industry
- Ensure high quality logistics services and solutions

Quality Policy - Our DNA



The policy provides that;

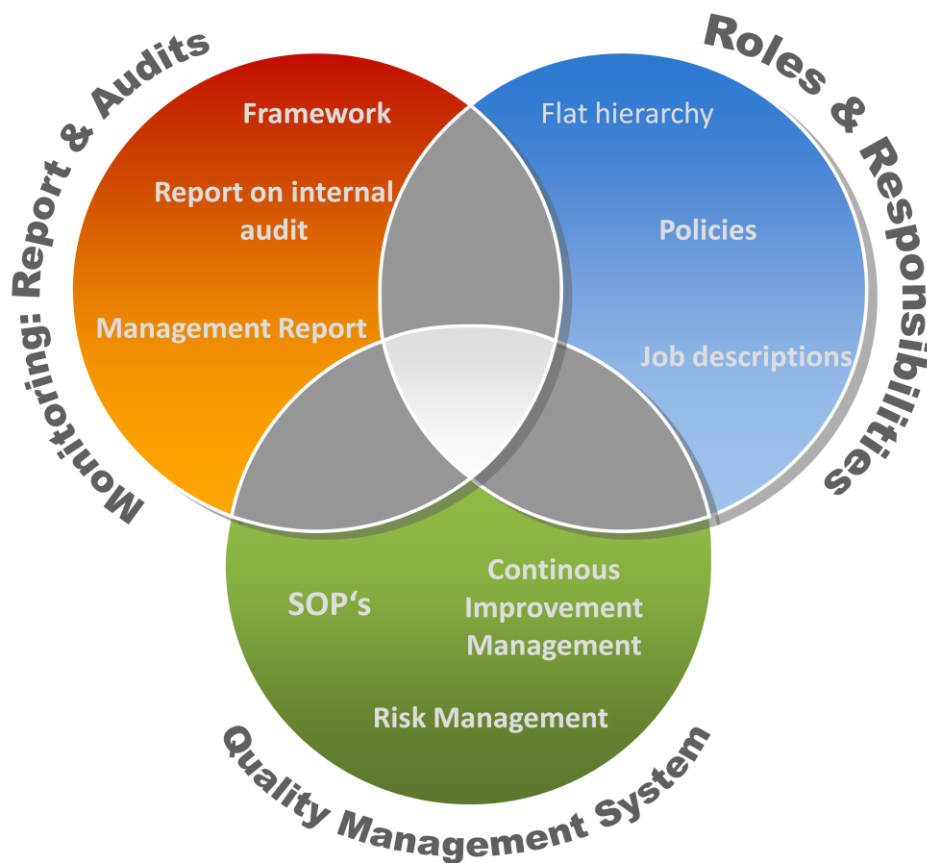
The importance of achieving the highest levels of quality and services excellence will be promoted effectively to ensure continual improvement is being driven across the whole organization.

Hanse-Service's QMB and CEO's are fully committed to meeting all applicable requirements and continually improving the effectiveness of the QMS.



Quality Management System Structure

The GDP-Compliance according to the new guidelines demonstrates that we have an established and effective quality management system. GDP-Compliance is a set of accepted standards for a quality management system which meets the requirements of the pharmaceutical industry.



Authorizing & Management of the Policy

The Chief Executive Officers are responsible for authorizing the Quality Policy and they have the responsibility to operate their service and logistic activities.